

Norwich Road, Aylsham
Opportunities and Constraints

Client Norfolk Homes
Date January 2020

Drawing no. 2019-364-001
Revision

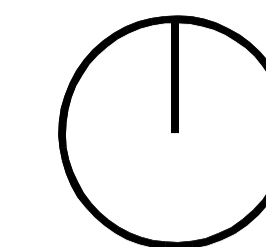
Drawn by LBL
Checked by

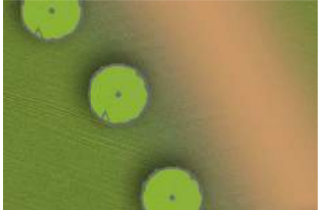


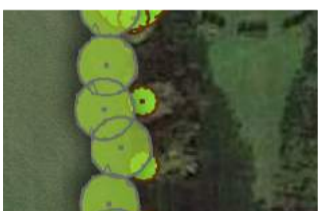


Scale 1:1000 @ A1

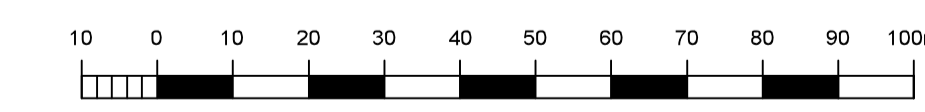
DRAFT

Eden Cottage
Hunt's Corner
Banham
NR16 2HL
01953 887656

**BROOM
LYNNE**
PLANNING
DESIGN
LANDSCAPE
www.broom-lynn.com
luke@broom-lynn.com



-  Indicative areas of development
-  Gardens and open space within development
-  Existing trees and hedgerow
-  Proposed trees and hedgerow
-  Vehicle access points
-  Potential footpath/cycleway



Norwich Road, Aylsham
Design Concept - including school site

Client Norfolk Homes
Date February 2020

Drawing no. 2019-364-005
Revision A

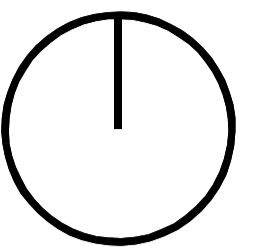
Drawn by LBL
Checked by




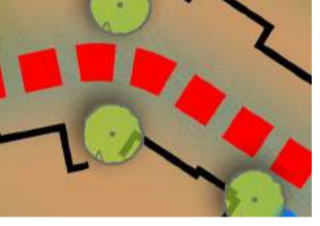
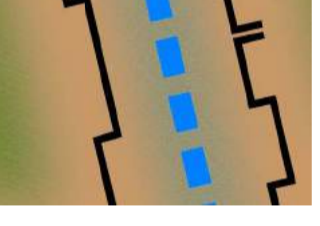
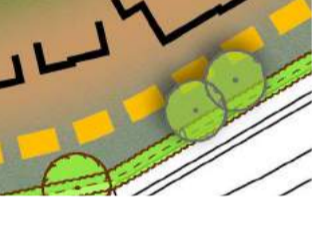
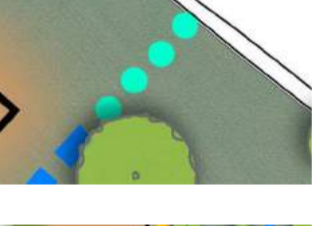


Scale 1:1000 @ A1

DRAFT

Eden Cottage
Hunt's Corner
Banham
NR16 2HL
01953 887656

**BROOM
LYNNE**
PLANNING
DESIGN
LANDSCAPE
www.broom-lynne.com
luke@broom-lynne.com



-  Indicative built frontages
-  Gardens and open space within development
-  Open space
-  Primary route
-  Shared streets
-  Driveways
-  Footpath/cycle/emergency access only
-  Play area
-  2-hectare school site



Norwich Road, Aylsham
Street Heirarchy - including school site

Client Norfolk Homes
Date February 2020

Drawing no. 2019-364-006
Revision C

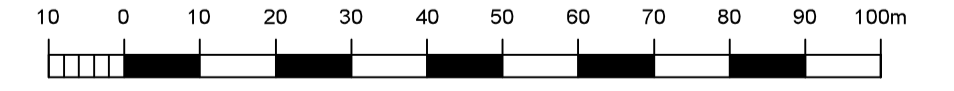
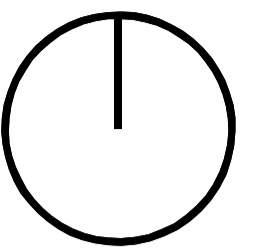
Drawn by LBL
Checked by

Scale 1:1000 @ A1

DRAFT

Eden Cottage
Hunt's Corner
Banham
NR16 2HL
01953 887656

**BROOM
LYNNE**
PLANNING
DESIGN
LANDSCAPE
www.broom-lynn.com
luke@broom-lynn.com



Norwich Road, Aylsham
 Indicative Masterplan - including school site

Client Norfolk Homes
Date February 2020

Drawing no. 2019-364-007
Revision C

Drawn by LBL
Checked by

Scale 1:1000 @ A1

DRAFT

Eden Cottage
 Hunt's Corner
 Banham
 NR16 2HL
 01953 887656

**BROOM
 LYNNE**
 PLANNING
 DESIGN
 LANDSCAPE
 www.broom-lynn.com
 luke@broom-lynn.com